

RCI HOLDING Group Profile



6,604
4,330
2,309

Empowering Communities for a Sustainable Future



www.rci-holding.com



About us

At RCI Holding, our unwavering commitment since establishment in 2000 is clear: we're dedicated to empowering communities for a sustainable future. From headquarters in Bucharest, Romania, and subsidiary offices in Athens, Greece, and Chisinau, Moldova, we extend our reach across 18 countries in Western, Central and Eastern Europe, as well as the UAE.

Our expertise spans Energy, Engineering, Financial Services, Management Consulting and cutting-edge Technology Solutions. Central to our approach is a diverse portfolio of specialized companies covering the entire spectrum of project cycle and business consulting. From Advisory Services and Technical Consulting to Engineering, Sustainability, Governance (ESG) Services, Regulatory Consulting, and IT&C Consulting, we deliver comprehensive solutions tailored to the unique needs of each client. A cornerstone of our service is our proficiency in securing EU funding. Through our dedicated EU financing department, we guide clients in identifying relevant funding sources, preparing applications and studies, and offering support throughout the implementation process.

In the realm of engineering services, we boast the expertise of RomCapital Invest, Tecnic, Ciga Energy Epic, and Triton. In the financial sector, RomCapital Invest, and Relians provide strategic financial services (with targeted support from Ciga Energy Advisory) tailored to meet the unique requirements of our clients. Our technology subsidiaries, including Ogre AI, Cima, Diomedes, and QuantX, lead the charge in providing cutting-edge solutions to drive digital transformation. In the energy sector, our comprehensive offerings are covered by Ciga Energy Advisory, Ciga Energy Hellas, Evolve, Ciga Energy, Cinta, BRP, Entrex, and ORI.

At RCI Holding, we abide by integrity, excellence and collaboration, which positively impact every project we undertake. Our mission is to drive sustainable growth, and our dedicated team of experts is united by a shared passion for innovation and maintaining high standards.

Our leadership cultivates a collaborative culture that ensures the success of our clients and the ongoing growth of our company. We believe in the strength of partnerships and take pride in the strategic alliances we have forged with leading global and local organizations. These collaborations strengthen our capabilities and enable us to offer even greater value to our clients. Together, we are shaping RCI Holding's vision, delivering integrated solutions that tackle today's challenges and contribute to a sustainable future.

AT A GLANCE

25
Years of
Excellence

75
Million Euro
Annual
Turnover

48
Million Euro
Turnover from
Professional Services

25
Billion Euro CAPEX
of Projects Managed

1,000+
Clients

3,000+
Completed
Projects

18
Countries
of Presence

200
Employees

250
Collaborators

14
Million Euro
Professional Insurance
Per Incident

Integrity • Excellence • Resilience • Accountability • Empathy

Mission, Vision and Values

Discover how RCI Holding is shaping a brighter future.

Our Mission:

Empowering Communities for a Sustainable Future!

Our Vision:

We stand at the forefront of innovative services, continuously exceeding the expectations of our valued clients.

Our Core Values:

INTEGRITY | We deeply value ethics, honesty, and authenticity. We uphold strict business standards and expect the same in all dealings with clients, partners, and colleagues.

EXCELLENCE | We take pride in our work and always strive to deliver the best results for our clients.

RESILIENCE | Our commitment to our partners and projects translates into the needed extra efforts for an outstanding product.

ACCOUNTABILITY | We take full responsibility for our actions and their impact on clients and communities.

EMPATHY | We are passionate and driven in our approach, always aiming to understand and connect deeply with our colleagues and partners.

TEAMWORK | We value the diverse expertise within our group and that of our partners. By bringing together various perspectives, we provide our clients with a comprehensive, unified approach. Together, we achieve more!

LEARNING ORGANISATION | We prioritize continuous learning and innovation across our group. We are seeking the latest ideas, methods, and technologies, and promote this mindset in all our partnerships.

SPREADING JOY | We are excited about our work, and we aim to create a positive and enjoyable team atmosphere.



RCI Holding provided Design Services for the rehabilitation of Caransebeş - Timișoara - Arad Railway, Lots 3 and 4



RCI Holding provided support in securing European funding through the Connecting Europe Facility for the expansion of PPC S.A.'s DEI Blue Public Charging Network in Greece



RCI Holding provided Technical Assistance in Project Management for the Bucharest Glina WWTP, Phase II

Certifications

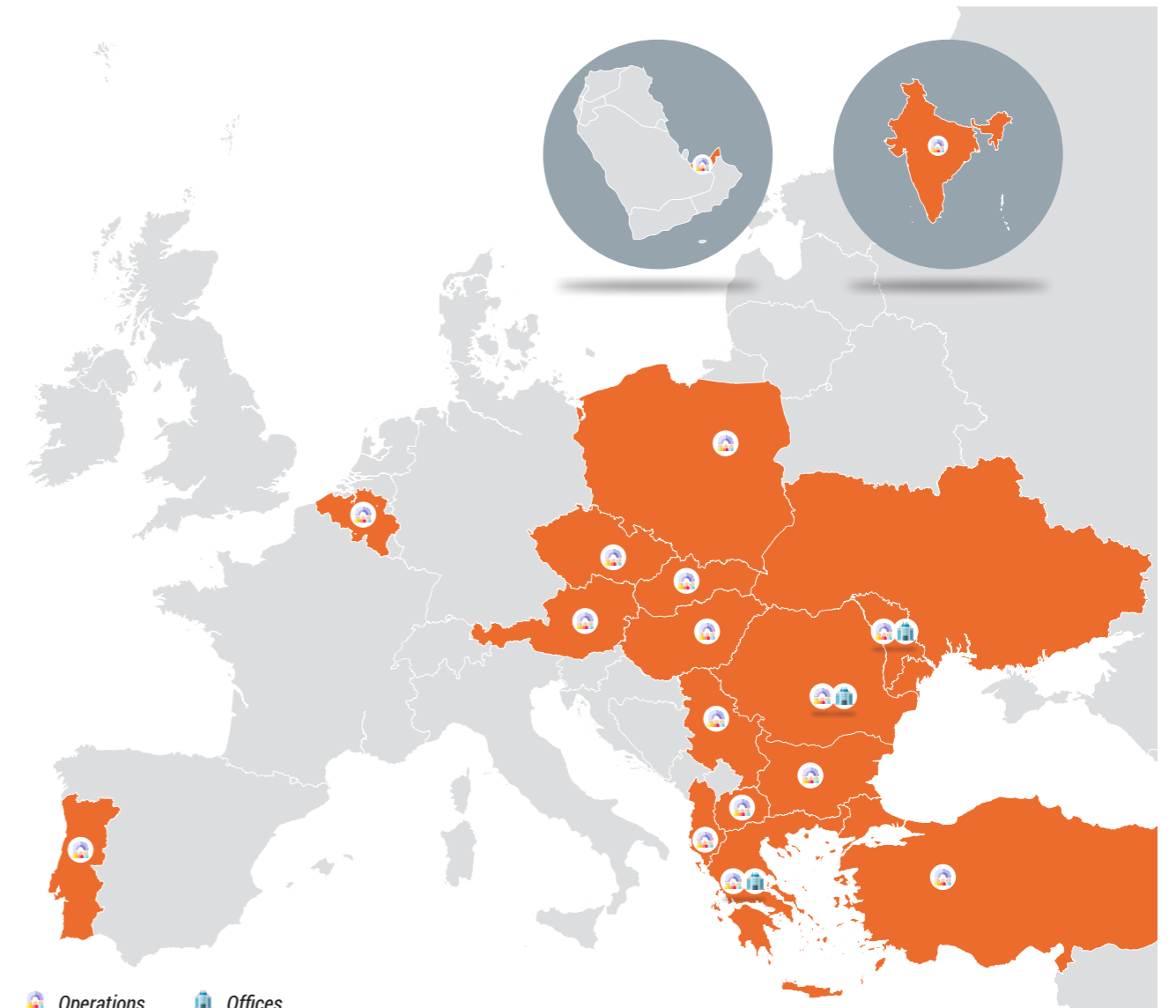
RCI Holding is committed to quality, environmental responsibility, occupational health and safety, anti-bribery, and information security.

Our organization is ISO 9001:2015 certified for quality management, ISO 14001:2015 certified for environmental management, ISO 45001:2018 certified for occupational health and safety, ISO 37001:2016 certified for anti-bribery management, and ISO 27001 certified for information security management.



Locations

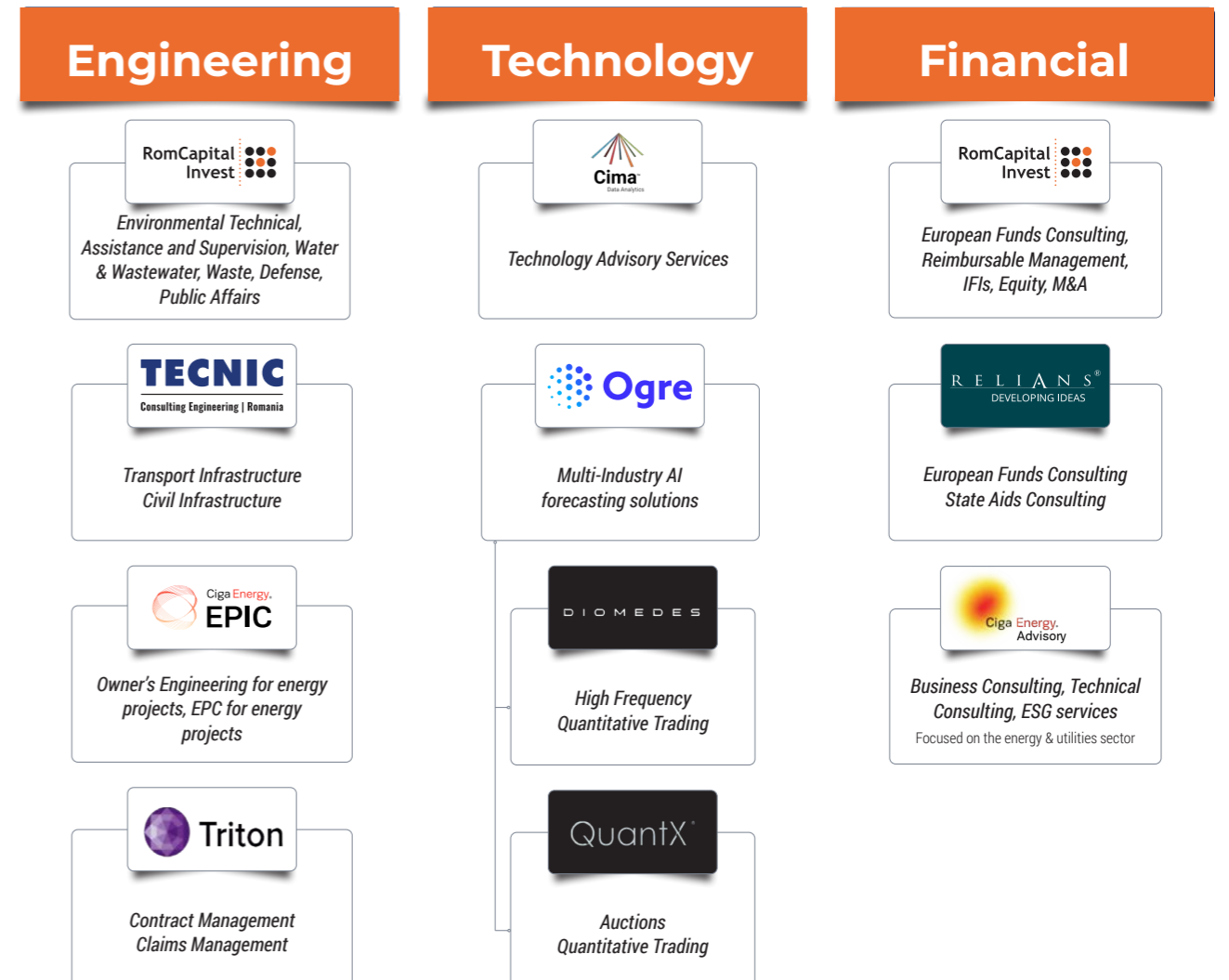
RCI Holding has offices in Romania, Greece, and the Republic of Moldova, with active operations in other countries in the region, such as: Albania, Austria, Belgium, Bulgaria, Czech Republic, Hungary, India, North Macedonia, Poland, Portugal, Serbia, Slovakia, Turkey, Ukraine, and, further beyond, in the UAE.



 Operations  Offices

Our Platforms of Business

RCI Holding specializes in four key business platforms:
Energy, Engineering, Technology, and Financial services.



Services and Activities

RCI Holding provides a wide array of services structured in six pillars.



Consulting Engineering

- Design
- Supervision (FIDIC engineering)
- Project Preparation (pre-feasibility, feasibility studies)
- Contract & claims management
- Owners'/ lenders' engineer
- EPC-M
- Project management



Financial Advisory & Solutions

- EU funding applications, evaluations and audits
- Banking and capital markets financing
- Project finance
- Investment advisory services
- Venture capital financing advisers
- Startup incubator services
- Public debt management service
- Technical assistance for public sector
- M&A Advisory



Management Consulting

- Strategy consulting
- Market studies
- Transformation & digital strategies
- Target operating models
- Smart city strategies
- Business Process re-engineering & automation
- Sustainability/ESG/ Decarbonization
- Multi-Industry Regulatory advisory
- Procurement advisory services
- M&A transactions support



Energy Markets

- Regulatory advisory
- Energy management solutions & automation
- Balancing Responsible Party services
- Aggregation (Ancillary services)
- Renewable Energy asset management
- Energy supply
- Energy trading
- Renewable Power generation



Digital Innovation & Technology

- Multi-industry AI forecasting solutions
- Innovation AI/ ML/ Blockchain
- Technology advisory, solutions providing and integration services
- Cyber security advisory
- High frequency quantitative trading
- Auctions quantitative trading



Other Activities

- Public/ corporate affairs
- Defense
- Offset program consulting



Regional Experience

The group is operating through subsidiary offices in Athens, Greece and Chisinau, Moldova and is involved in various projects in Romania, Poland, Czech Republic, Slovakia, Hungary, Serbia, North Macedonia, Bulgaria, Albania, Ukraine, Turkey, Austria, Belgium, Portugal, India, United Arab Emirates.

Sample project types include technology-driven transformation strategies, market studies for the electricity and gas sectors, energy efficiency and emission reduction analysis projects, as well as complementary services to the electricity and natural gas markets, such as regulatory studies and technical due diligence services.

Our extended track record includes notable achievements and landmark projects, including: Digital Strategies for Power & Utilities companies in CSE Europe; Technical Master Plan for the Ellinikon (the largest smart city development in Europe), leading IT&C pillar and supporting the Energy and Smart City pillars, as well as preparing the Environmental Benefit Report; Regional EV charger network expansion strategy for a major player in the Balkans; EU Funds applications for financing digital solutions and energy efficiency measures,

Design, Management and Supervision for various sections of EU Transport Corridors for motorways and railways.

Our expertise offered support for multilateral infrastructure projects coordinated by the main International Financial Institutions (such as the World Bank, EBRD, EIB and EU funds). RCI participated in a large number of project deals, mergers and acquisitions, debt restructuring and privatization.

We collaborate with our regional partners across Central and Eastern Europe and Central Asia, leveraging their expertise—primarily in IT and technology—to provide our clients with a fully integrated package of solutions, from strategy to implementation and solution delivery.

Our Clients

Our team is a multidisciplinary mix of highly driven individuals, covering engineering, economics, business consulting and environmental skills (to which a large network of SMEs is added on a project-by-project basis). We are honored to serve as a reliable partner for our esteemed clients from various sectors:



RCI HOLDING PROVIDED SUPPORT FOR THE DEVELOPMENT OF THE TECHNICAL MASTER PLAN FOR THE ELLINIKON - EUROPE'S GREATEST URBAN REGENERATION PROJECT

Our Portfolio

Discover a relevant selection of projects spanning various sectors of activity and geographies, showcasing our expertise and commitment to excellence.



ENGINEERING PROJECTS



Technical Assistance in project management for the Bucharest WWTP (Glina) - the largest wastewater treatment plant in Romania

Sector | Industry: Environmental

Technical Assistance in project management for the 350 million euro "Glina Phase II - Bucharest WWTP, including the rehabilitation of the wastewater collectors and wastewater cassette under Dâmbovița river" Project Contract financed under Structural and Cohesion Funds. Our team provided the following services:

- Preparation of Application Form for EU Funding with all supporting documents / Cohesion Fund.
- Institutional strengthening of the Final Beneficiary/ Training, PCM.
- Master Plan and Feasibility Study revision.
- Public Procurement support and contract management.
- Publicity of EU intervention.
- Financial management.

Supervision Services for Iași Emergency Regional Hospital

Sector | Industry: Healthcare

The Iași Emergency Regional Hospital, boasting 850 beds, 20 operating rooms, and approximately 3,000 staff, will replace the existing 260-year-old "Sfântul Spiridon" Hospital and is a major healthcare infrastructure project designed to significantly enhance the quality and accessibility of medical services in the Iași region. The hospital complex will consist of a seven-story building, including a basement, ground floor, and five upper floors. It will feature an independent two-level underground parking facility. The horizontal extension of the building spans three full floors (basement, ground floor, and first floor), with certain sections extending to three additional levels (third and fourth floors). The hospital will be equipped with three square-section towers that house patient units, extending from the second to the fifth floor.

The design includes green terraces on the first-floor rooftop, between the internal courtyards, and on the third-floor rooftop. The basement will accommodate support services such as laundry, morgue, maintenance, and engineering. The ground and first floors will host diagnostic and therapeutic services, as well as outpatient clinics. Educational areas, including amphitheatres, will be located on the third and fourth floors. Outpatient services will be spread across the first and second floors. Additionally, a helipad will be constructed on the building's rooftop.

The hospital is expected to handle an estimated 47,500 inpatient cases, 100,000 emergency cases, and 258,000 outpatient services annually during its first year of operation. The annual operating cost is projected at €74.96 million, with an estimated annual revenue of €80.4 million. The project aims to increase the quality of life and well-being in the region, improve patient satisfaction through modern facilities, and enhance clinical standards, efficiency, and sustainability of hospital services in Iași County. The total project budget is 2,379,575,202.02 RON, with an eligible amount of 684,906,513.63 RON, including 223,320,500.00 RON funded by the European Regional Development Fund (ERDF) and 458,296,407.65 RON from the state budget. The implementation period spans 106 months, from May 1, 2018, to February 28, 2027.

Our team provides works supervision services for the construction of the new hospital.





Supervision Services for Ploiești - Buzău Highway, Lots 1, 2, and 3

Sector | Industry: Transportation, Highways

The Ploiești-Buzău Highway is a crucial infrastructure project that will connect Dumbrava in Prahova County, at the junction with the Bucharest-Ploiești Highway, to the city of Buzău. Covering 63.25 km, this highway will improve mobility on the TEN-T Core road network, reduce travel time, enhance traffic safety, and support regional development.

The project is divided into three sections:

- Lot 1: Dumbrava to Mizil, covering 21 km from km 0+000 to km 21+000.
- Lot 2: Mizil to Pietroasele, spanning 28.35 km from km 21+000 to km 49+350.
- Lot 3: Pietroasele to Buzău, extending 13.90 km from km 49+350 to km 63+250.

Each section is designed to be independently operational upon completion. The highway will feature 6 interchanges, 42 bridges and passages, 4 service areas, and 2 Maintenance and Coordination Centers, with a design speed of 140 km/h and a 26-meter-wide platform, including four lanes, emergency lanes, and safety measures.

The project will also include 24 electric vehicle charging stations and 65 snow protection barriers. The total cost is 4.69 billion RON, funded by the EU's National Recovery and Resilience Plan, with a project duration of 151 months.

Our team provides works supervision services.



Design Services for Caransebeș - Timișoara - Arad Railway, Lots 3 and 4

Sector | Industry: Transportation, Railways

Lot 3 and 4 of the Caransebeș - Timișoara - Arad railway is a part of a wider project to expand the Rhine - Danube Corridor of the Trans-European Transport Network (TEN-T). Lot 3, spanning from Timișoara East to Ronaț Triaj Gr. D, covers a distance of 13.86 km, starting from kilometer point 568+399 of the Bucharest - Jimbolia railway line.

Lot 4 extends further, encompassing a length of 55 km from Ronaț to Arad.

Our team provides design services.

Design Services for Târgu Mureș - Miercurea Nirajului section of the A8 Highway

Sector | Industry: Transportation, Highways

The project involves designing and building a 24.4 km stretch of the "Unirii" A8 Highway, connecting Târgu Mureș to Miercurea Nirajului. Led by Nurol İnşaat ve Ticaret A.Ş., the initiative includes constructing 36 bridges, passages, and viaducts to improve regional connectivity.

It's funded through PNRR, targeting completion by 2026 to bolster national development.

Our team provides design services.



Owner's Engineer Services for the construction of a 295 MW natural gas power plant in Craiova

Sector | Industry: Energy, Cogeneration

The project will unfold in three distinct phases. Phase I focuses on preparatory activities, including analysis and optimization of the Feasibility Study, and the preparation of procurement documents for selecting the EPC Contractor.

Phase II will involve implementing services such as analyzing and approving technical documentation, preparation of the Supervision Manual, and providing supervision services and project management.

Phase III will cover warranty phase services, including assistance during the Warranty Period of the natural gas power plant.

The investment value in the new energy group is 267 million euro.



Project Management for the CET Hidrocarburi S.A. Arad

Sector | Industry: Energy, Cogeneration

Project Management Services, Works Supervision and Site Management for the "High-Efficiency Cogeneration Thermal and Electrical Energy Production Source at CET Hidrocarburi S.A." project.

With a substantial investment of approximately 100 million euros, supported by the European Recovery and Resilience Fund and the local administration, this innovative project will modernize CET Hidrocarburi and save the District Heating System of Arad Municipality.

Key Project Highlights: new high efficiency cogeneration unit composed of three 10.3 MWe and 9 MWt engines and one 100 Gcal heat only boiler. Engineered for the future, the facility can operate on either traditional gas or an advanced 20% hydrogen-gas blend, leading the way to further reduce carbon emissions.



RCI HOLDING PROVIDES SUPERVISION SERVICES FOR THE CONSTRUCTION OF BUCHAREST RING ROAD, LOT 3



FINANCIAL SERVICES PROJECTS



PPC S.A. Greece – EV chargers under Connecting Europe Facility

Sector | Industry: Energy, e-Mobility

The main objective of the project is to implement a reliable network of publicly accessible recharging stations for light-duty electric vehicles to allow electric charging along the TEN-T road networks in Greece. The project is contributing to a short period of time to the climate targets assumed at EU level. The development of a network of super-fast chargers in places near the National Roads is part of the updated Business Plan of PPC towards the Electrification of the National Road network. The infrastructure will be located on the relevant TEN-T road sections identified in the “eligibility map” within a maximum driving distance of 2 km from the trajectories of the TEN-T road network, calculated from its closest exit.



DEPOMUREȘ – Gas Storage under Connecting Europe Facility

Sector | Industry: Energy, Gas

The existing Depomureș natural gas storage facility in Romania will receive funding worth 12.77 million euro to increase its working capacity and its daily injection and withdrawal rates.

In line with the REPowerEU Plan, the upgrade of the Depomures storage makes an essential contribution to market integration and natural gas security of supply for Romania and its neighboring countries by mitigating the lack of storage capacity in a region greatly affected by the gas crisis.

PPC S.A. Romania financing documentation

Sector | Industry: Energy, Transmission

Consulting services to all three of Public Power Corporation (PPC S.A.) Romanian’s energy distribution subsidiaries (Rețele Electrice Muntenia, Banat and Dobrogea), helping them obtain approximately 70 million euro in non-reimbursable European funding covering four modernization projects.

Our responsibilities covered preparing the eligibility analysis, developing and submitting the financing documentation and offering assistance throughout the evaluation process.

Distribuție Energie Electrică Romania financing documentation

Sector | Industry: Energy, Distribution

The total value of the anticipated investment, a staggering 395 million euro, with a substantial non-refundable of 252 million euro, underscores DEER’s commitment to advancing Romania’s energy landscape.

Our teams have prepared the financing applications and provided the needed support in contracting for 13 projects to be implemented by DEER. The size and scope vary, ranging from the upgrade of individual transformer stations to the modernization of distribution networks spanning multiple regions.

Distribuție Energie Oltenia financing documentation

Sector | Industry: Energy, Distribution

Our Ciga Energy Advisory team led the consortium in providing the quality consulting services needed to obtain more than 38 million euro, non-reimbursable European funds.

Our services included eligibility analysis, documentation preparation, and ongoing assistance throughout the evaluation process of the submitted project applications.

Aquatim Timișoara - Phasing of POIM projects

Sector | Industry: Environmental

We offered services associated with the submission of the application, by providing overall coordination of the preparation of the application form, technical, institutional and eligibility check of the Beneficiary;

Preparation of the project funding documentation according to POIM requirements, including DNSH assessment, ILI calculation according to EIB methodology.



MANAGEMENT CONSULTING

Digital transformation for HEDNO Greece

Sector | Industry: Energy

The goal of this large and very ambitious project was to identify and understand the key challenges facing HEDNO in the changing energy sector and any potential gaps in its already-started Digitalization Journey.

HEDNO obtained the following decision-supporting materials:

- Digital vision,
- Gap analysis report,
- List of initiatives and their prioritization,
- High-level cost-benefit analyses,
- Organizational changes report,
- Impacted Process red-flag report,
- Key Risk Registry, and Communication package.

EBRD - Cross Regional: Digitalisation in the energy sector

Sector | Industry: IFIs

The EBRD 2021-25 Strategic Capital Framework recognises that digitalisation and technology affects every sector the Bank works in and consequently has accelerating digital transition in its COO as one of its three core themes. Investments in sustainable infrastructure – covering transport, municipal infrastructure and energy – represents a core business for the Bank and such projects have proven in the past to significantly benefit from digitalization. The project is still ongoing, hence some of the activities are still underway. The project outputs are as follows:

The Compendium and the digital roadmaps:

- We have prepared the Compendium based on information made available by the Client;
- We have included detailed questionnaire responses for each digital technology identified and we have presented them in digital format;

EBRD action, digital audits and digital action plans:

- We have indicated the most appropriate financing, technical support and legal and policy dialogue tool for each technology in the Compendium;

Digital transformation for CEZ Romania

Sector | Industry: Energy

The organization had several ambitions: improve its standing in Romania and in CEZ Group; comply with regulatory obligations; maximize capital investments and operational expenditure; increase its readiness to address proliferation of distributed generation, and its ability to adapt to market model evolution. This led to a revamp of the entire organization and a new operating model.

Results & Benefits for the Client:

- Smart Strategy defining company ambitions, trajectory, success criteria and guiding principles;
- Smart Solutions to bridge gaps between current operations and future states;
- Smart Action Plan with clear activities, responsible parties and timeline;
- Successfully implemented projects, some with 100% attracted funding from EU;
- Functional Digital and Innovation Office.

- We have prepared templates / formats for EBRD to carry out digital audits and develop digital action plans in the future;
- We have developed a template for EBRD's preliminary digital audit;
- We have developed and presented templates for EBRD's preliminary digital assessment of future clients;

We will identify pilot projects with the Bank. The selection of pilot projects shall be based on:

- Level of Digital Maturity;
- Type of the project (RES/Networks/Auxiliary/cross sectoral);
- Costs and Benefits.



Lamda Development - The Ellinikon: Smart City feasibility of solutions, Technical Master Plan and Environmental Impact Assessment

Sector | Industry: Urban Regeneration

The client, Lamda Development, was looking to develop a signature smart city and had developed a strategy and a list of potential solutions to be implemented.

Our Consortium was selected to provide support in better defining the smart solutions to be implemented and to prepare a technical master plan to be used in the next development stages.

- Feasibility review of all solutions considered,
- Technical master plan for all selected solutions,
- ICT deployment plan,
- Recommended implementation roadmaps,
- Correlation with city development,
- Additionally, our experts were involved in the analysis of environmental footprint for the technical solutions that the Greek developer intends to implement at the level of the Ellinikon city,
- Assessment and reporting of impacts according to GRI indicators,
- Mapping a materiality matrix that supports GRI standards,
- Alignment of use cases with sustainable development goals and environmental objectives of the EU taxonomy.



PPC S.A. E-mobility network cross-border expansion

Sector | Industry: Energy

DEI Blue, PPC's E-mobility subsidiary, wanted to understand the local market environments in the four target countries in Western Balkans and additionally in Turkey, for expansion and to attract the most suitable business partners that will facilitate their ambition to become a regional leader in EV charging infrastructure.

Local markets survey:

- Understanding the European context relevant for Balkan countries (strategic direction, current situation and development perspectives),
- Understanding the local context (interest in e-mobility, energy markets context, road infrastructure, e-mobility markets context),

Deep dive on implementation specific aspects for the local markets:

- Regulatory framework analysis, installation and operation process, key stakeholders, financial instruments available,
- Recommended business approach, including recommended dimensioning of charging infrastructure targets and routes recommendations,
- Support in securing suitable partnerships with local stakeholders,
- Identification of potential interested industries & evaluation of prospects,
- Facilitation and support during discussions with prospects.



VEOLIA – Digital Journey

Sector | Industry: Water and Wastewater/ District heating

The client organization was engaged in a digital transformation project at CEE level (Romania, Hungary, Czech Republic, Slovakia, Poland and Bulgaria).

However, the level of digitalization was not standardized across all countries. Our team was contracted to assess the current level of digital maturity in each country, define digitalization and other improvement initiatives across all business lines, and assist in defining a more digital Operating Model. We used a proven approach, combining research with interviews, and industry best practice models.

PPC - Carbon footprint and avoided emissions estimation

Sector | Industry: Energy

Our team is supporting PPC's sustainability goals in line with the Group-level strategy by assessing the carbon footprint and avoided emissions of its services, and designing a tool that helps the company quantify these emissions in time. In response to recent developments, PPC Greece is striving to understand the carbon footprint of its services. The goal is to showcase the societal benefits of emissions reduction facilitated by PPC's e-Mobility division, DEI blue. The Client sought both an in-depth literature review and a standardized methodology for assessing avoided emissions. The project plans to expand its scope to include other PPC projects and initiatives, alongside the creation of a parametric tool for ongoing emission monitoring.

Titan Cement - Energy Markets Study covering the SEE region

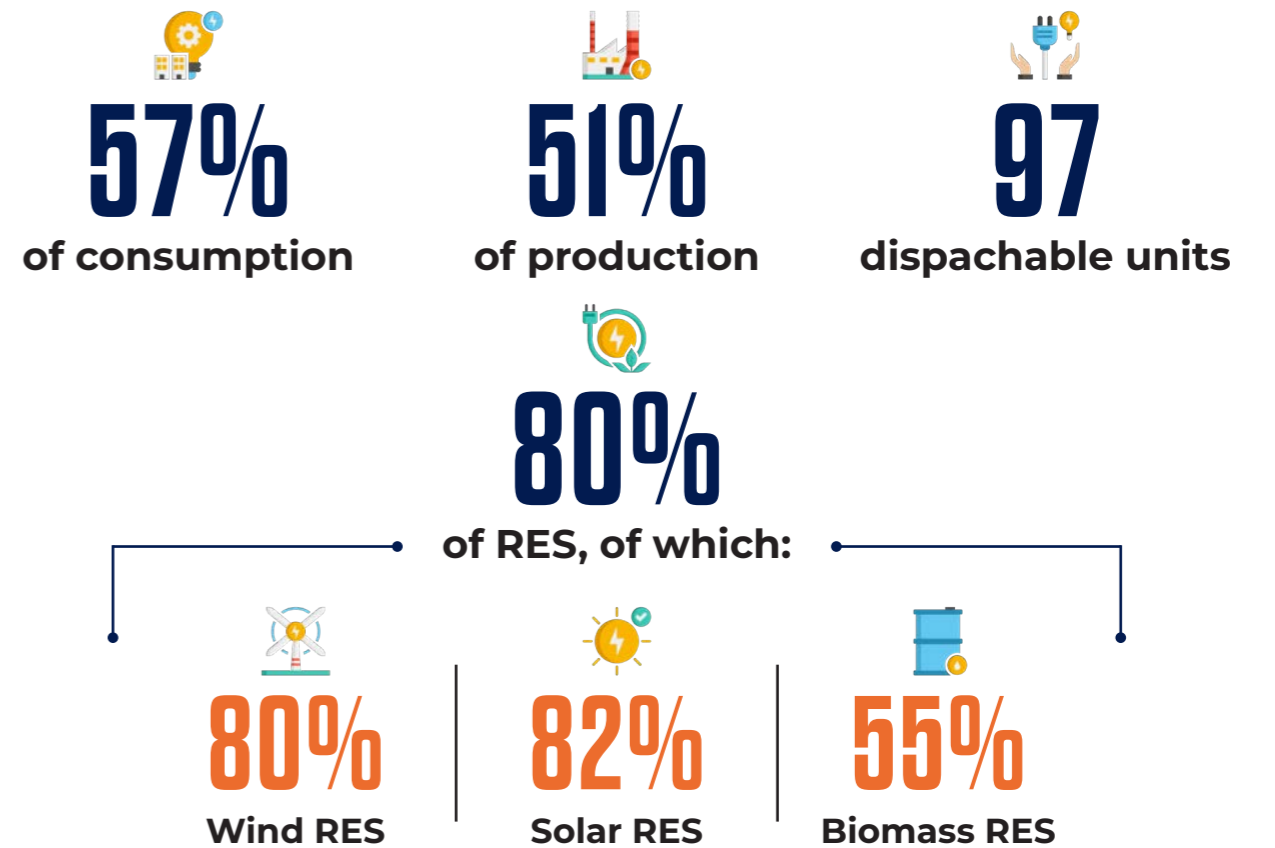
Sector | Industry: Industrial

The Client has requested RCI Holding, together with Bain & Company, to assist in analysing energy market organization, structures, price dynamics, regulatory impacts, and the role of renewables and investment mechanisms, as well as future perspectives. The Client is an international cement and building materials producer, active in 25 countries on 4 continents. Titan Cement is currently interested in gaining insights into energy market dynamics and regulations in the SEE region, to optimize their market positioning and investment strategies.

ENERGY PROJECTS

With our comprehensive range of services, RCI Holding serves as a single point of contact for facilitating the sustainable transformation of utilities from start to finish. Expanding our regional presence to encompass 18 countries, in the CSE region and the UAE, we cater to various industries within the Power and Utilities sector. Our expertise encompasses a range of advanced solutions in energy management, including optimizing resource efficiency, managing renewable assets, and facilitating energy trading and supply. We focus on integrating innovative strategies for energy production and market balancing to drive sustainable outcomes.

We provide balancing responsible party services for:



RCI HOLDING ADVISORY TEAM HELPED MULTIPLE CLIENTS TO ASSESS THE RISKS AND OPPORTUNITY OF ACQUIRING RES PROJECTS AND PERFORMED TECHNICAL AND E&S DUE DILIGENCE SERVICES FOR PRODUCTION OF ELECTRICITY FROM RENEWABLE SOURCES FOR ~4.3 GW SOLAR AND WIND, OUT OF WHICH ~2.5 GW BECAME SIGNED TRANSACTIONS.



CEZ Romania - Flexibility services from DSO perspective

Sector | Industry: Energy Distribution

Project outcomes:

- Analysis of the European and national regulatory framework & potential flexibility service providers;
- Analysis of the impact that the emergence of flexibility services would have on the investment plan of a DSO (CEZ distribution company);
- Opportunity analysis regarding the acquisition of flexibility services vs. investments (OPEX vs. CAPEX);
- Identification of an area that would be suitable for flexibility services in the operating area of DEO.

Pirelli Romania

Sector | Industry: Industrial, Automotive

Project outcomes:

- Energy Production assessment for on-site initiatives
- Financial modeling for on-site initiatives
- Financial modeling for physical off-site initiatives
- Financial modeling for virtual off-site initiatives



Engie - Go to market strategy for BESS

Sector | Industry: Energy Production

Project outcomes:

- Battery sizing
- Revenue streams (CAPEX, OPEX)
- Project feasibility indicators (IRR, NPV, PBT)
- Project technical indicators (state of charge, battery wear)

E.ON Romania - Demand Forecast Solution

Sector | Industry: Energy

Main activities:

- Business Analysis
- ETL
- Data Science
- Integrations
- Reporting
- Testing
- Average ROI 3-4 months
- Average error reduction/ 10-15%



National action plans for energy efficiency sector in Romania – SWOT Analysis of results

Sector | Industry: Energy

The objective of the assignment was to support ANRE with the preparation of a complete evaluation, based on a SWOT analysis, of the results achieved after the implementation of the First and Second National Action Plan for Energy Efficiency (NPAEE) in order to define the correct directions and actions to be taken in the Third NPAEE, in order to achieve the targets set by the EU for Romania in the EE sector.



National Regulatory Authority in Energy (ANRE) - Regulatory framework for (i) controllable OPEX and (ii) flexibility services

Sector | Industry: Energy

As part of this project we prepared two specialized studies regarding regulatory best practices pertaining to:

- Controllable maintenance and other OPEX costs
- Flexibility services framework

The first study covered: a multi-point comparison between Romanian DSOs, an analysis of controllable OPEX influencing factors, European best practices in the field (including efficiency factor), an indication of potentially applicable unit costs, efficiency factor estimation methods, simulations of potential factors applied to Romanian DSOs.

The second study looked into: calculation models and principles to fundament grid reinforcement vs. flexibility (CAPEX vs. OPEX), data exchange between TSO – DSO – consumer/ producer considering the existing it architecture and data flows, flexibility platforms (congestion calculation/ congestion auctions), DSO perspective analysis of flexibility organisation: procedures, register, platforms.

TECHNOLOGY PROJECTS



Verbund EVs Charging Stations Forecast

Sector | Industry: Technology

The operator needed a solution to fully automate the forecasting process and to increase the accuracy of the predictions for a network of 1000 EV charging stations.

The difficulties of the project were related to the numerous charging stations from rural areas that had little usage and very limited historical data. We also had challenges in terms of the varying data types - quality, format and granularity.

We made real time data connection to all stations and implemented our AI forecast tool dedicated to EV charging stations operators - integrations, forecast engine and reporting modules.

We also had to build sophisticated new AI models in order to better predict the demand at the stations and achieve the results desired by our partner.



PPC Technical Losses Forecast

Sector | Industry: Technology

The client was in urgent need of a forecasting solution to reduce losses from operating the service in its 3 local DSOs. High price volatility as well as high balancing costs affected the business greatly.

Historical data problems due to the Covid pandemic and war in Ukraine made it difficult to reach the project KPIs.

The three DSOs received our demand forecast and technical losses forecast solutions, together with a customized reporting platform built in Tableau.



Transelectrica Technical Losses Forecast

Sector | Industry: Technology

The client was looking to improve its forecasting capabilities for demand and technical losses to decrease balancing costs and energy waste. They were facing challenges like energy imbalances, increased number of prosumers and a high adoption of renewables.

Limited data automation and data analytics readiness as well as high operational complexity during shifting regulations. We had to implement a comprehensive data science and management activity to lay down the building blocks for our cutting-edge tech.

The TSO implemented our demand and technical losses forecast solutions, together with a highly customized reporting tool. The solution greatly improved forecasting accuracy and helped the operator in both reducing operational costs as well as balancing related penalty costs.



Delgaz Grid Non-Technical Losses Forecast

Sector | Industry: Technology

The distributor needed a solution to fully automate anomaly detection in the grid and to improve the consumption anomaly detection capabilities for the 54 SRMs along the whole distribution network.

We were faced with incomplete non real-time data as well as a great variability in the patterns. On top of that, the aging infrastructure had leaks and made it difficult to both identify anomalies as well as verifying the output of our solution.

We delivered our solution for anomaly detection that used 4 main methodologies for detection, including change point detection and clustering and unsupervised learning.

We also implemented a kanban workforce management module, automating alarms and checks for anomalies with high probabilities of occurrence.





Consultancy & Design for Digital Transformation Implementation dedicated to Complexul Energetic Oltenia

Sector | Industry: Technology

In collaboration with PricewaterhouseCoopers, we provided strategic consultancy and design services for the Digital Transformation Program at Complexul Energetic Oltenia. The project encompassed developing a comprehensive transformation strategy, optimizing business processes, and ensuring the successful selection, acquisition, and implementation of IT systems, including an ERP platform. Through in-depth process analysis, feasibility studies, and technical execution planning, CIMA DATA delivered a roadmap for technology-driven efficiency, enhanced operational control, and long-term digital innovation. This initiative enabled Complexul Energetic Oltenia to modernize workflows, improve data management, and strengthen decision-making capabilities, aligning the organization with industry best practices.

Our Approach

To achieve the project objectives, we carried out the following key activities:

1. Digital Transformation Strategy Development:

- Created a strategic roadmap outlining long-term objectives while aligning with short-term priorities and available resources.
- Identified and defined the digital technologies required for implementation and their business impact.
- Mapped out the transformation process, ensuring strategic relevance across all business functions.

2. Comprehensive Process Analysis & Optimization:

- Assessed all business processes (management, operations, support, monitoring, and evaluation).
- Identified and optimized key processes to be integrated into future IT systems.

3. Feasibility Study & Technical Design:

- Updated the Feasibility Study to validate IT system implementation plans.
- Developed the Technical Execution Project, detailing the digital transformation architecture and system requirements.

4. ERP Acquisition & Implementation Support:

- Assisted in the procurement and integration of an ERP system, ensuring alignment with operational needs.
- Provided technical and economic reports for procurement procedures.
- Designed test scenarios and conducted system audits post-implementation.

Results & Benefits for the Client

Through this project, Complexul Energetic Oltenia achieved:

- ✓ A clear Digital Transformation Strategy, guiding future initiatives.
- ✓ Optimized business processes, enhancing efficiency and digital readiness.
- ✓ A structured ERP implementation roadmap, ensuring smooth adoption.
- ✓ Enhanced decision-making, through improved data accessibility and reporting.
- ✓ Mitigated risks and compliance alignment, ensuring operational resilience.

By modernizing its IT landscape and business processes, Complexul Energetic Oltenia strengthened its position as an innovative, digitally enabled energy leader, ready to adapt to evolving industry demands.



Digital Transformation for National Agency for Environment Protection (ANPM)

Sector | Industry: Technology

National Agency for Environment Protection (ANPM) was looking to modernize and enhance digital services for citizens and businesses, streamlining operational processes across ANPM and its 42 regional branches.

Our Approach

To achieve these objectives, we executed the following key activities:

1. Comprehensive Process & System Analysis

- Conducted an inventory and assessment of existing work processes and IT systems.
- Identified operational inefficiencies and proposed targeted improvements.

2. Technical & Functional IT Design

- Designed the technical architecture and functional requirements for a future IT platform.
- Ensured the platform aligns with public environmental service needs and regulatory requirements.

3. Procurement & Documentation Support

- Developed comprehensive documentation for functional and technical specifications.
- Ensured alignment with the approved budget and funding requirements.
- Assisted in securing approvals from the Technical-Economic Committee for the Information Society (CTE).

4. Technical Assistance in Procurement & Implementation

- Provided expert support in evaluating IT bids for software and hardware acquisitions.
- Assisted with clarifications, appeals, and contract finalization.
- Offered ongoing technical assistance for product and service acceptance (2022-2026).

Results & Benefits for the Client

The project delivered significant improvements, including:

- ✓ A rapid AS-IS analysis, identifying key challenges and seven strategic development directions.
- ✓ A structured roadmap for digital service enhancements, ensuring efficiency and scalability.
- ✓ A robust technical design for the new application, improving environmental service management.
- ✓ Comprehensive bidding documents, streamlining hardware and software procurement.
- ✓ Expert support in the procurement and implementation process, ensuring compliance and quality.

By modernizing its digital infrastructure and public service delivery, ANPM has strengthened its role as an efficient, technology-driven institution, enhancing accessibility and transparency for citizens and businesses.



Strategical Technical consulting IT services for Ministry of Development, Public Works, and Administration (MDLPA)

Sector | Industry: Technology

Ministry of Development, Public Works, and Administration (MDLPA), wanted to improve collaboration between the ministry and local authorities through enhanced digital communication and consultation processes..

Our Approach

To achieve these objectives, we delivered:

1. Analysis of Existing Systems & Information Flows

- Assessed current communication and operational processes by participating in events organized by MDLPA and Association of Romanian Cities (AOR).
- Identified the specific needs of consultation and communication between MDLPA, associative structures, and their members.

2. Technical Specifications & Solution Design

- Defined the technical requirements for implementing an optimal videoconferencing system, covering both hardware and software.
- Designed a comprehensive consultation platform, ensuring it meets operational needs while securing intellectual property rights for the ministry.

3. Security & Interoperability Enhancements

- Established technical security requirements for the platform and conducted rigorous testing.
- Identified interoperability standards to ensure seamless integration with existing IT systems.

Results & Benefits for the Client

The project delivered substantial improvements, including:

- ✓ Enhanced communication between central public authorities, local institutions, and associative structures.
- ✓ Streamlined document management through electronic processing and archiving.
- ✓ A collaborative digital environment for workgroups and committees.
- ✓ Structured databases tailored to institutional needs.
- ✓ Georeferenced data integration within the GIS system for better spatial analysis.

By modernizing IT systems and optimizing collaboration frameworks, we helped MDLPA create a more efficient, transparent, and interconnected public administration environment.



Document Management System for Hidroelectrica

Sector | Industry: Technology

Hidroelectrica was looking to implement a comprehensive turn-key Document Management System (DMS), addressing critical challenges stemming from the growing demands of the electrical energy production and distribution business. As the company expanded over the years, it required a digitized, integrated system to streamline internal and external processes, enabling efficient recording, processing, and storing of data within its workflows.

To meet Hidroelectrica's needs, we conducted thorough analysis and design, followed by seamless implementation, rigorous testing, and quality assurance. The project culminated in a successful go-live, with full staff training to ensure operational readiness. Additionally, the project required to provide the necessary hardware, including servers, storage, and networking, along with the ELO licenses.

Key outcomes of the project included the development of several modules: information capture, document management, document generation, and workflow management, all integrated with Hidroelectrica's SAP and Primavera ERP systems. The system also facilitated improved document access, retrieval, consultation, and organization, along with structured data management and integration with email clients and physical archives. A robust reporting module further supported decision-making and operational efficiency.

This integrated DMS solution significantly enhanced Hidroelectrica's internal processes, promoting data accuracy, accessibility, and compliance, thus positioning the company for continued growth and operational excellence.



Salesforce CRM Implementation for Hidroelectrica

Sector | Industry: Technology

Hidroelectrica was looking to implement a turn-key CRM platform aiming to support the electricity sales process by providing specialized tools for managing prospects, customers, bids, and contracts. This strategic project was driven by the company's need to streamline operations and improve decision-making capabilities as it expanded its business over the past five years.





We followed a meticulous approach, which included the initiation, analysis, solution design, configuration, development, and testing phases. Additionally, the project encompassed data migration, a roll-out to production, and a post-production support phase to ensure smooth operations and seamless knowledge transfer.

Key results of the project include the successful deployment of a modern CRM system on Salesforce platform that optimized Hidroelectrica's internal processes, enhanced collaboration, and ensured accurate, real-time data on prospects and customers. This platform significantly reduced bureaucracy, sped up routine procedures, and improved communication channels across the organization. The integration of real-time market and competitive insights further empowered decision-makers, enhancing overall operational efficiency.

Through the implementation, Hidroelectrica benefits from increased professionalism among staff, along with the development of a highly trained team capable of administering and utilizing the new CRM platform to drive future growth and operational excellence. This new Salesforce CRM system has proven to be a vital tool in driving informed, timely decisions, and improving the customer relationship management process.

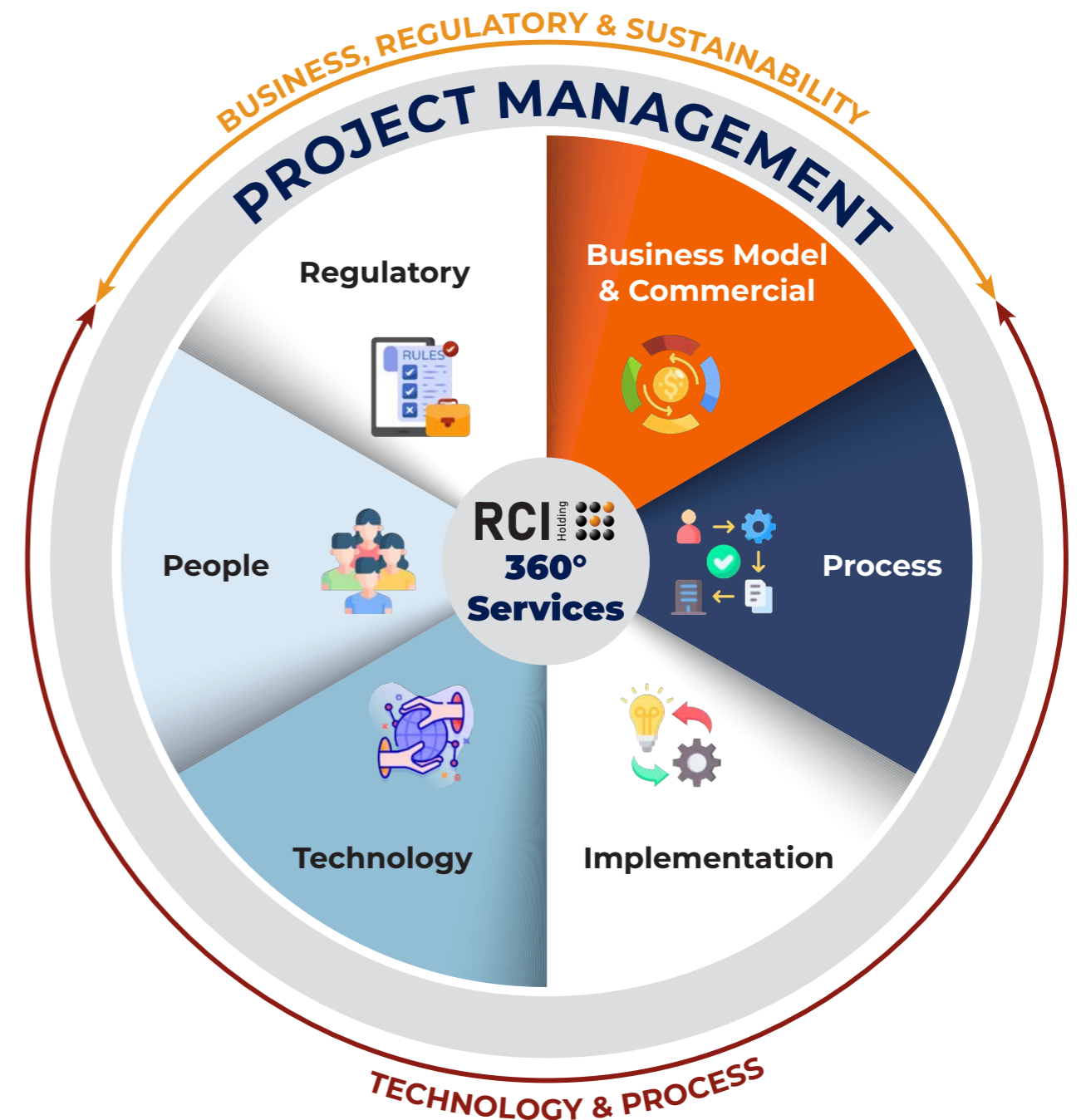
Meet our Partners

Our strong regional partnerships unlock specialized experience that allows us to broaden our service portfolio in several high impact areas for our clients.

	<p>Global solution provider for electricity distribution system operators. <input checked="" type="checkbox"/> Smart metering, Grid automation, Software solutions for grid productivity, Virtual training</p>
	<p>Global specialist in energy management and automation solutions. <input checked="" type="checkbox"/> Energy Solutions (SCADA, ADMS, OMS, DERMS, dedicated software for aggregators (AutoGrid))</p>
	<p>Leader for worldwide Field Service Management solutions for Utilities. <input checked="" type="checkbox"/> Field Services Management Solutions Virtual Training / Augmented Reality Solutions</p>
	<p>Leading technical advisor and quality assurance provider for Solar PV. <input checked="" type="checkbox"/> Owner's engineering for PV parks in the region</p>
	<p>An ATOS company, global system integrator for solutions in Energy and Utilities. <input checked="" type="checkbox"/> End-to-end software solutions for SmartGrid and Nuclear PowerGen</p>
	<p>Top technology center in the field of safe and reliable energy, industry and nuclear medicine. <input checked="" type="checkbox"/> Cooperation in the region for nuclear projects</p>
	<p>Technology leader in Enterprise Integration. <input checked="" type="checkbox"/> Enterprise Integration, Data Management and Business Process Management</p>
	<p>Trust in intelligent document management and digital processes. <input checked="" type="checkbox"/> Secured enterprise content management and team collaboration</p>
	<p>The most important institute in the field of research, development and innovation in information and communication technology (ICT) from Romania. <input checked="" type="checkbox"/> Research, Technical Assistance, Evaluation of Solutions, Cloud Computing and Cyber Security</p>
	<p>International project developer, general contractor, service provider and operator. <input checked="" type="checkbox"/> Energy Solutions</p>

Comprehensive Project Management Framework

This diagram illustrates RCI's holistic approach to project management, ensuring that all critical areas are covered for long-term success.





Contact

15 Dacia Boulevard, District 1,
010402, Bucharest, Romania
+40 21 202 95 90

office@rci-holding.com
www.rci-holding.com

